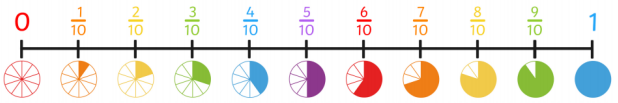


Ashfield Valley Primary School— Year 3 -Autumn 1 Maths Knowledge Organiser

Tenths



Addition and subtraction

A7: Column Addition

$$\begin{array}{r} 687 \\ + 248 \\ \hline 935 \end{array}$$

S11: Column Subtraction

$$\begin{array}{r} 6 \quad 11 \quad 1 \\ 723 \\ - 356 \\ \hline 367 \end{array}$$

Multiplication and division

M6: Column Multiplication

$$\begin{array}{r} 147 \\ \times 4 \\ \hline 588 \end{array}$$

D10: Short Division

$$136 \div 4 = 34$$

$$\begin{array}{r} 34 \\ 4 \overline{)136} \\ \underline{12} \\ 16 \\ \underline{16} \\ 0 \end{array}$$

2D and 3D Shapes

Circle	Triangle	Hexagon	Octagon	Oval
1 curved side	3 straight sides	6 straight sides	8 straight sides	1 curved side
0 vertices	3 vertices	6 vertices	8 vertices	0 vertices
Parallelogram	Pentagon	Rectangle	Square	Trapezium
4 straight sides	5 straight sides	4 straight sides	4 straight sides	4 straight sides
4 vertices	5 vertices	4 vertices	4 vertices	4 vertices

Measurement

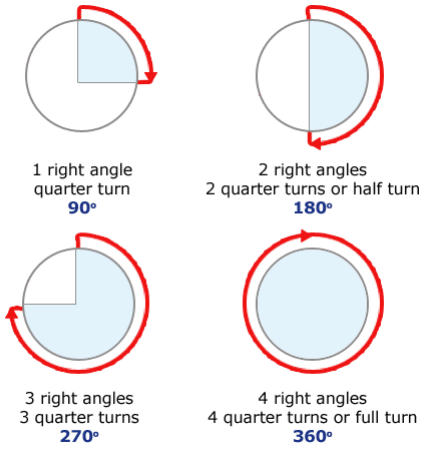
1000g = 1 kilogram
1000ml = 1 litre
100cm = 1 metre

Statistics

Day	Number of ice lollies sold
Monday	
Tuesday	
Wednesday	
Thursday	
Friday	
Saturday	
Sunday	

= 10 ice lollies

Angles



Properties of 3D shapes

<p>Cone</p> <p>2 Faces 1 Edge 1 Vertex</p>	<p>Sphere</p> <p>1 Face 1 Edge 0 Vertices</p>	<p>Tetrahedron</p> <p>4 Faces 6 Edges 4 Vertices</p>	<p>Cuboid</p> <p>6 Faces 12 Edges 8 Vertices</p>
<p>Cylinder</p> <p>3 Faces 2 Edges 0 Vertices</p>	<p>Cube</p> <p>6 Faces 12 Edges 8 Vertices</p>	<p>Triangular Prism</p> <p>5 Faces 9 Edges 6 Vertices</p>	<p>Square-based pyramid</p> <p>5 Faces 8 Edges 5 Vertices</p>

How many ice lollies were sold on Tuesday?

Which times tables do you need to learn?
Remember to use TT Rocks Stars to prac-