

# Year Three Science knowledge organiser

## What are the functions of the different parts of a plant?

### Key vocabulary

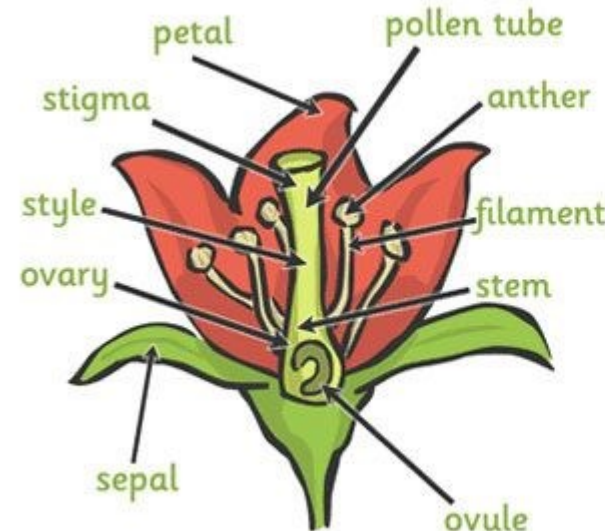
Nutrients	These substances are needed by living things to grown and survive . Plants get nutrients
Fertilisation	When the male and female parts of the flower have mixed in order to make new seeds for
Stamen	The male parts of the flower.
Carpel	The female part of the flower.
Pollination	When pollen is moved from the male anther of a flower to a female stigma.
Germination	When a seed starts to grow.
Pollinator	An animal or insect that carries pollen between plants.

### How does water move through a plant?

1. The roots absorb water from the soil.
2. The stem transports water to the leaves.
3. Water evaporates from the leaves.
4. This evaporation causes more water to be sucked up into the stem.

### The life cycle of a flowering plant

1. **Germination**– The seeds start to grow.
2. **Growing and flowering**– The plant grows bigger and forms a flower.
3. **Pollination**– Pollen from the anther lands on the stigma and travels down the style.
4. **Fertilisation and seed formation**– The pollen joins with an ovule and a seed starts to form.
5. **Seed dispersal**- The fully formed seeds are moved away from the parent plant.



### Seed dispersal

Seed are dispersed by:

1. Water
2. Shaking
3. Carrying
4. Eating
5. Dropping
6. Bursting